

ERG Jet™

ERG-JET LENS

The ERG-Jet is a contact lens for performing an electroretinogram, or ERG, provoked by light stimulation of the retina in either humans or animals.* The electrode is made of a gold ring just a few angstroms (10^{-10} meter) thick, which can be safely placed in contact with the cornea using a viscous conductive liquid.



polygone.ch Photos: Lisa Roehrich Version E 04/2018

A computer process generates graphics and numeric formatting of the collected data. The results are presented accurately, legibly and synthetically.

Thus, the doctor has a reliable and accurate tool to assess the chances of success of an operation or to detect genetic diseases that other methods do not reveal.

The ERG-Jet is also appreciated in the veterinary field thanks to its simplicity and its smaller size compared to some competing products.

LENS F-06, SPECIFICATIONS

Diameter :	12 mm (1/2 ")
Wire length :	1000 mm (39 ")
Radius of curvature :	7.90 mm
Female connection :	DIN 1.50 mm
Design :	P. A. Grounauer M.D.

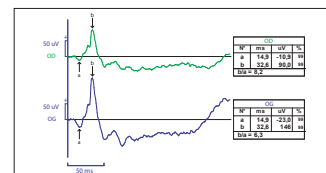
ERG-JET PACKAGING

The ERG-Jet lens is sold in a sterile blister pack; single use only.
Sales unit: 50 or 12 pieces.

ADVANTAGES AND RESULTS

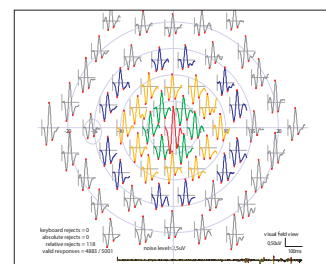
1. The **accuracy of the values** measured by ERG-Jet as well as their amplitude allows and facilitates normative assessments.

Isolated ERG Result.
Source: Metrovision



2. The **optical quality** of the contact lens also allows the recording of the multifocal ERG, which is a major advance in quantifying retinal functional deficits.

Multifocal ERG Result.
Source: Metrovision



* Animal use is out of the scope of the medical device according to MDD 93/42.



STERILE R

USA pat. 4386831
EUROPE pat. 0036095

RUE DE LA TUILERIE 42 CH-2300 LA CHAUX-DE-FONDS
T +41 32 968 09 08 F +41 32 968 42 67 info@fabrinal.ch
www.fabrinal.com

fabrinal
EYE CARE